

Consultation Strategy

**Water Quality Monitoring Framework for the Katherine
and Daly River Catchments**

September 2008

Contents

1	Background	3
2	Objectives.....	3
3	Consultation Process.....	4
3.1	Stages in Consultation Process	4
3.1.1	Stage 1 - Raising awareness.....	4
3.1.2	Stage 2 - Development of Draft WQMF	5
3.1.3	Stage 3 - Release of Draft WQMF and Call for Submission	6
4	Project Plan	8
5	Stakeholders	9

1 Background

This consultation strategy has been prepared to assist the communication and consultation process for the development of a Water Quality Monitoring Framework (WQMF) for the Katherine Daly River Catchment that is consistent with the *National Water Quality Monitoring Strategy*.

The WQMF will be prepared by TRaCK in collaboration with Greening Australia and in consultation with the Territory Government and key stakeholders including, but not limited to, indigenous groups and representatives, interest groups, primary industries and tourism representatives, environmental groups, landholders, research organisations, water planners and local community members.

The identification and involvement of a broad range of stakeholders is essential in ensuring a balance of views to best inform the development of the WQMF and to ensure that the WQMF is locally relevant and can be effectively implemented.

To ensure all stakeholders have the opportunity to be involved consultation process number of consultation mechanisms will be employed. The mechanisms will serve dual purposes to a) raise awareness and b) enable feedback. Some of the mechanisms used will include:

- Media releases
- Public forums and workshops
- Individual meetings
- Presentations and information sharing at interest group meetings
- Distribution of flyers
- Distribution of Information Papers
- Web based information, and
- Survey forms.

2 Objectives

The objectives of the consultation process are to:

- Identify key stakeholders
- Encourage and provide mechanisms for involvement and input to the development of the WQMF
- Obtain locally relevant feedback of ideas, issues and / or concerns
- Work directly with stakeholders to ensure ideas, issues and/or concerns are clearly understood, and
- Demonstrate a commitment to stakeholder participation.

3 Consultation Process

The consultation strategy aim is to a) raise awareness of the project and b) seek input from stakeholders to inform development of the Draft WQMF and c) seek comment on the content of Draft WQMF.

A Water Quality Monitoring Co-ordinating Group (Co-ordinating Group) has been established and will be instrumental in providing advice and guidance through out the life of the project. The Co-ordinating Group is made up of both Territory and Federal Government representatives, Non-Government Organisation (NGO) representatives and technical experts.

Early identification of key stakeholders is fundamental to the consultation process. A number of stakeholders have already been identified and further discussions with members of the Co-ordinating Group, Greening Australia and media releases will assist to identify other stakeholders, or at the very least, provide an avenue where by individuals or groups can be register there interest and be included to the stakeholder list.

3.1 Stages in Consultation Process

The consultation process has 3 main stages from project inception to completion, these include:

- Raising awareness
- Input to inform development on the Draft WQMF
- Submission and comment on the content of the Draft WQMF.

3.1.1 Stage 1 - Raising awareness

Stage 1 requires a clear outline of the project and why it is important for stakeholders to be involved. It will set boundaries for the project so there is a clear understanding of the issues the project will and will not be addressing. It will also outline some of the questions we will be seeking. This will enable to start people thinking about the value of their water resources, the threats and risks to the health of their water resources and ideas on how water quality monitoring should be managed in the future. In addition, it will clearly map out the stages of the project and where direct input from stakeholders is required.

Stage 1 will primarily involve raising public awareness, and include:

- Media releases in the *Katherine Times* and *Northern Territory News* advising of the project and highlighting the need for community and stakeholder involvement. This may also include radio interviews.
- Interested persons will be requested through the media release, to make contact with TRaCK either via, email, telephone, fax or in writing. Interested people or groups will be added to the stakeholder distribution list.
- Previously identified and new stakeholders will be sent an information flyer
- Briefing papers will be made available for interested groups (i.e. NRM Board meetings etc), and
- Individual meetings will be conducted on an as needs basis.

- All material will be made publically available on the TRaCK and links will be established from the ENRETA websites to the TRaCK WQMF page. Information on the website will include media releases and flyers.

3.1.2 Stage 2 - Development of Draft WQMF

Development of the Draft WQMF will involve a range of mechanisms to enable a broad range of stakeholders to contribute to the design of the Draft WQMF. Proposed mechanisms include:

- Mail out to stakeholder advising of upcoming public meeting
- Survey forms with reply paid envelopes for those people interested to attend public forum, and
- Web link to TRaCK and NRETA websites where survey forms can be downloaded and potentially online survey forms will also be made available.
- Notices will be placed in the Public Notices section of the *Katherine Times* and *Northern Territory News* advising of the upcoming public forums
- 4 public forums will be held at Darwin, Katherine, Daly River and Douglas Daly. Additional public forums will be held with Indigenous communities as required, and
- Individual and group meetings will occur on an as needs basis.

In addition to the mail-out, web based information, survey forms and public forums, it is recognised that individual and group consultation will also be necessary and will occur on an as needs basis.

The public forums will include PowerPoint presentations as an introduction to the projected and clearly outlining the project scope and expected outcomes. Following the presentation, a workshop will be conducted using white boards and butchers paper to recorded views of the stakeholders. Following the public forums / workshops, a summary of main issues raised and points discussed will be recorded. This information will be used to inform development of the WQMF.

All information collected during the Stage 2 consultation process, i.e. from both public forums, and survey responses will be will be tabled and made publically available via the TRaCK and NRETA websites and copies will also be made available via email or hard copy upon request. Note all tabled and publically available comments will be recorded anonymously.

In addition to the public forums / workshops, records will also be kept of individual or group meetings summarising main views and discussion topics, provided permission is first obtained from the individual or group.

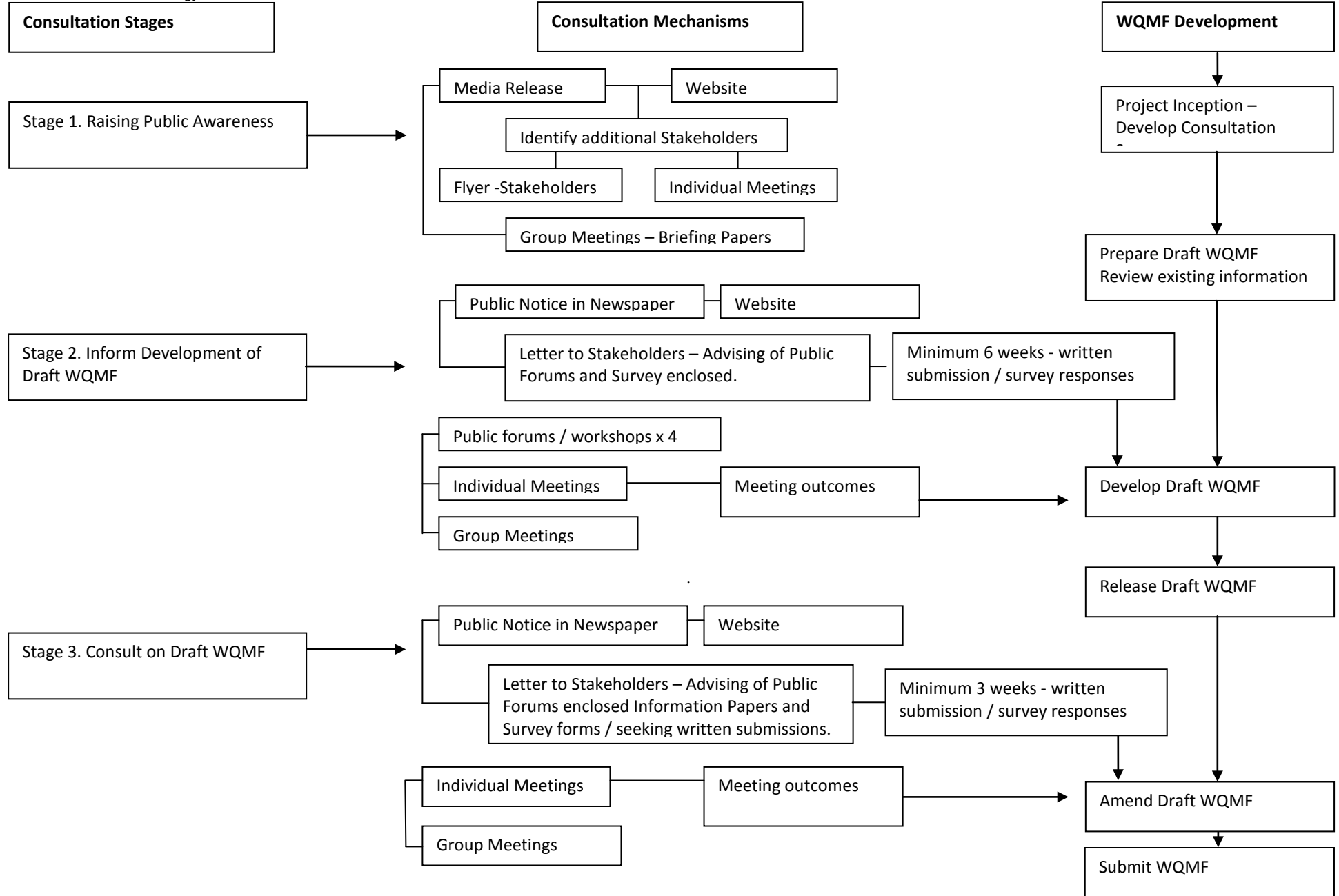
The Co-ordinating Committee will review the comments received and make recommendations, taking into consideration the comments, as to the development of the WQMF.

3.1.3 Stage 3 - Release of Draft WQMF and Call for Submission

Once the Draft WQMF is developed, a further round of consultation will commence for the purpose of a) demonstrating to the stakeholders how their input has contributed to the development of the WQMF and b) seeking comment on the Draft WQMF. The following mechanisms will be used;

- Advertisements will be placed in the Public Notices section of the *Katherine Times* and *Northern Territory News* advising the release of the Draft WQMF, detailing where copies for the document can be obtained or viewed and calling for written submissions and/or comments on the content of the Draft WQMF.
- Copies of the Draft WQMF will be made available via the TRaCK website, and at regional NRM offices i.e. Greening Australia Office Katherine and Local Council Offices.
- Identified stakeholders will be sent a letter and information paper to advise them copies of the Draft WQMF will be available for comment and where the Draft WQMF can be viewed and / or accessed. Both hard copies and electronic copies will be made available upon request. The information paper will be a condensed version of the Draft WQMF.
- A minimum of 3 weeks will be given from the date of release of the Draft WQMF for stakeholders to provide written submission. Submissions may be received electronically or via mail.
- Submissions will be collated and again will be made available upon request and will be accessible via the TRaCK and NRETA websites.

The submissions received will be reviewed by the Co-ordinating Group, who will make final recommendations regarding amendments to the Draft WQMF. Following recommendations from the Co-ordinating Group, the Draft WQMF will be amended and submitted to the NT NRM Board.



5 Stakeholders

Water Quality Monitoring Co-ordinating Group

Government Departments

Natural Resources Environment, Arts and Sport (NRETA)
Department of Regional Development Primary Industries, Fisheries and Mines (DRDPIMF)
Power and Water (PW)
Department of Business, Economic and Regional Development (DBERD)
Department of Business and Employment (DBE)
[BoM](#)

Researchers

CSIRO Tropical Ecosystems Research Centre
NALSMA
TRaCK

NRM Groups

NT NRM Board [Regional Facilitators](#)
Daly River Management Advisory Committee
Katherine Water Advisory Committee
Wangamaty Landcare
Greening Australia NT
Landcare
Katherine Regional Weed Advisory Committee
Roper River Landcare Group
Environment Centre of NT

Councils / Shires

Katherine Town Council
[Victoria Daly Shire](#)

Local Members

Member for Daly
Member for Katherine

Indigenous Groups

Jawoyn Association
Kalano Community Association
Pine Creek Aboriginal Advancement Association
Northern Land Council – [additional contact - Mona Liddy NLC ARG Facilitator](#)
Naiyu Nambiyu Community Government Council
Nyirrangung Mardruilk Ngadberre Regional Council
[Sue Jackson / Marcus Finn / Emma Woodward – CSIRO Berrimah](#)

Tourist Parks / Fishing

Katherine Region Tourist Association
Woolianna on the Daly
Perry's on the Daly (fishing)
Banyan Farm (fishing)
Barra Fishing
Daly River Inn

Amateur Fishermen's Association

Agricultural / Horticultural / Pastoralists

Manbulloo

Katherine Cattle Transport Centre Pty. Ltd.

Katherine District Farmers Association

Katherine Horticultural Association

Northern Territory Cattlemen's Association

Northern Territory Horticultural Association

NT Agricultural Association

Peanut Company of Australia

Tipperary Group of Stations

Cave Creek Station

Oolloo Farm

Ballongilly Farm

Eumaralla Plantation

Red Dirt Fruits

Surelines Produce

Kumbychants Station

Summit Fruit Orchards

Top Kat Fruits

Roper River Agriculture

Forsbrook Traders

Taylors Park

Hayseed Ag P/L

Lillyponds / Hickeys – Sand Mine

Sturt Downs Station

King River Station

Maud Creek Station

Jarrahdale

Timber Corp.

Other

Douglas Daly Community Development Association Inc.

BEAR Biologics – Consultant

H2O Drilling and Rehabilitation Contractors

Bores NT

Symes Agricultural Contractors

Great Southern Limited

Rollands Quarry

GBS Gold (Maud Creek)

Malak Malak

Sinclairs

Miscellaneous

Refer to DRMAC Contact List numerous individuals.